

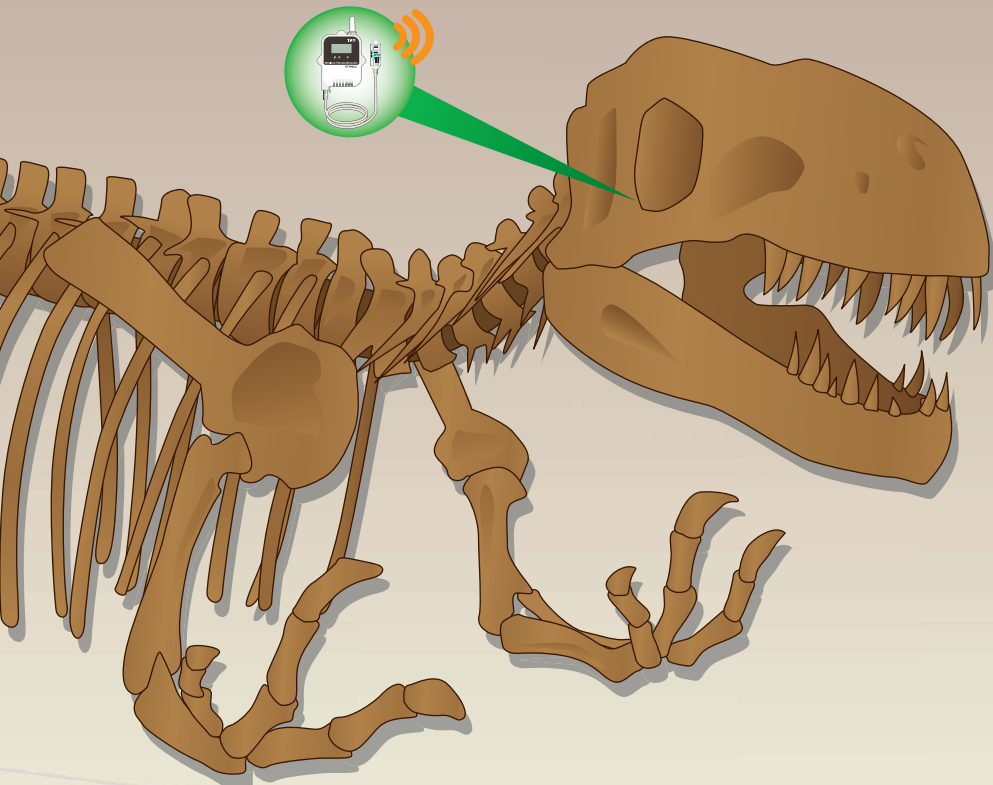
# Wireless Monitoring System



Automatic Data Collection - Remote Monitoring - Wireless Installation

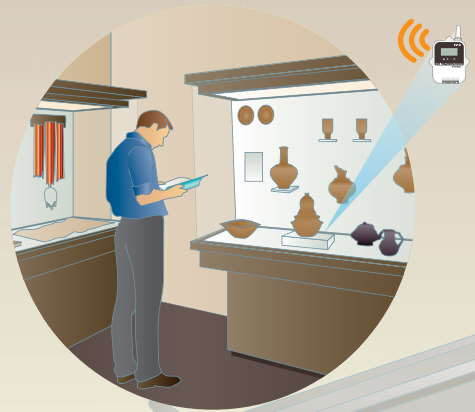


Automatic Monitoring of Environmental Parameters For Museums



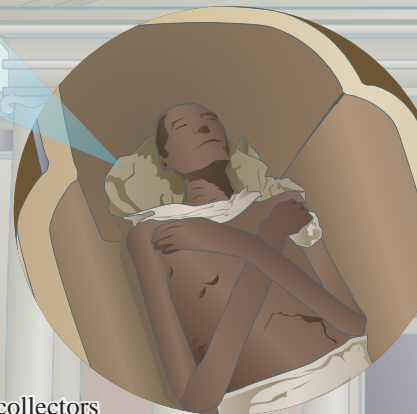
# Automatic, Error-Free

The T&D RTR-500 Wireless Data Logger provides multi-point recording and reporting of data is then automatically downloaded to a collection point without the need for manual collections means that archived records



## Collect the Data- Not the Logger

Opening display cases and climbing ladders to collect data loggers- when you remember to, is a thing of the past. T&D's automatic data collection system means that high value staff need not spend their time fetching data loggers, and can concentrate on being productive.



## Warning Notification

All of T&D's network connected data loggers and collectors incorporate a warning notification capability. Upper and lower limits can be set for each measurement location independently, and when exceeded will result in notifications being sent to up to 5 different email addresses, text messages to cell phones or pagers.



External Output



LAN Base Unit

## Independent Operation

T&D data loggers operate independently of other building systems. Battery operation and backup insures that data collection is continuous, even during power and network outages- which could be the most important time to monitor conditions.



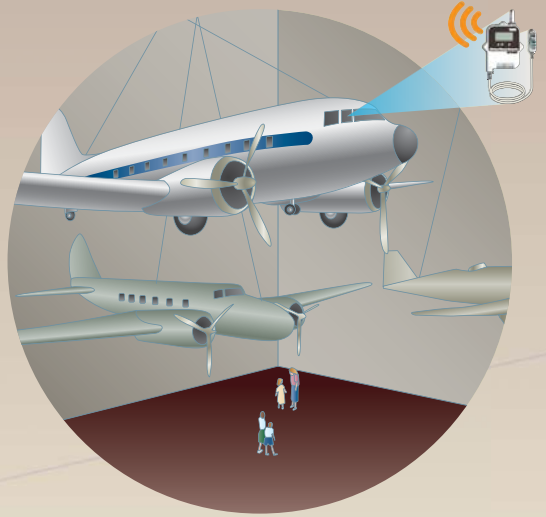
Handy Data Collector

Direct P

\*These illustrations only show possible application examples.

# Wireless Record Keeping

Logging System allows for completely configurable, recording of temperature, humidity, illuminance and UV. Recorded data is stored and archived to a server or other centralized data storage facility without human intervention. Automated data recording and reporting will always be accurate and complete.



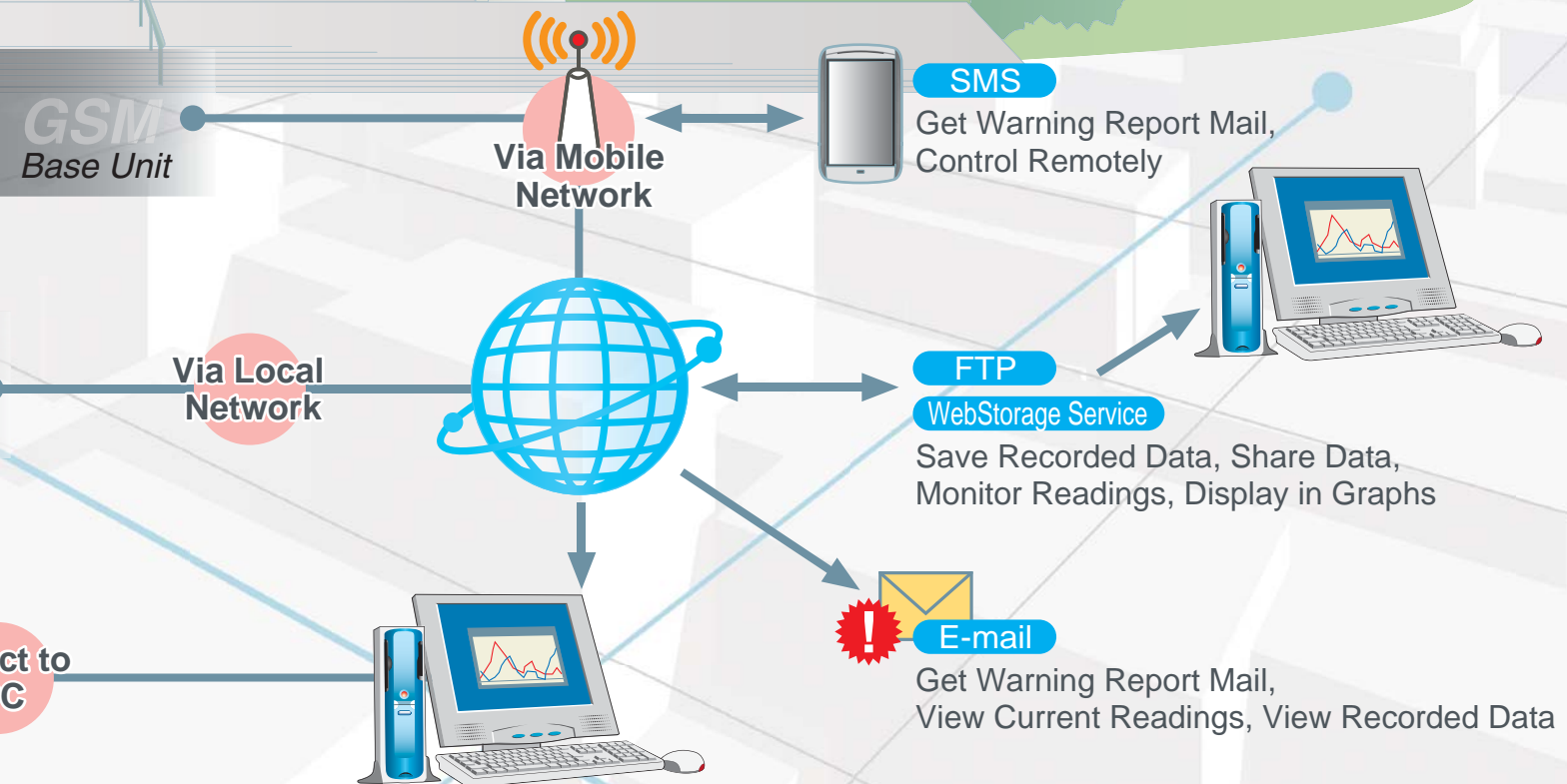
## Wireless Installation & Collection

T&Ds wireless system means that monitoring and recording can be accomplished at measurement points that are difficult to access without the expense of running unsightly cables. With battery operation and wireless connectivity, T&D loggers can be placed almost anywhere.



## Remote Monitoring

The network capability built into T&Ds Loggers and Data Collectors allows for simple monitoring and collection of recorded data from remote locations. View and download data from another building or storage facility to a central location over a LAN, WAN or the Internet.

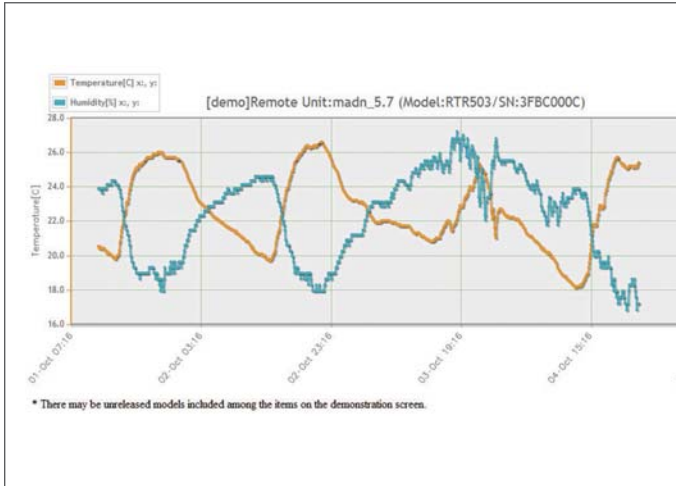


# T&D WebStorage Service

T&D WebStorage Service is an online service provided by T&D Corporation.

By setting up any of our compatible products to transmit recorded data and current readings to our dedicated Internet server, Users can use our WebStorage Service to access and share their data anytime from anywhere.

Free of Charge



Current Readings		Recorded Data [TRZ]		Current Readings Data [XML]		
* There may be unreleased models included among the items on the demonstration screen.						
Base Unit Info		Remote Unit Info				
Group Name	Remote Name	Battery Level	Time at Gathering of Current Readings	Measurement Readings	Operation	
RTR-500AW_online_DEMO (RTR500AW)	Chromag	Samurai (RTR501)	[Full]	15-Dec-2010 19:02:41	[ch1] 21.3 C [ch2] 3502 lx [ch3] 0.045 mW [ch4] 20.2 C [ch5] 34 % [ch6] 5623000 lx [ch7] 84.96 mW	[Refresh] [Delete]
		Stylus (RTR574)	[Full]	15-Dec-2010 19:02:44		[Refresh] [Delete]
	TREK	madn_5.7 (RTR503)	---	15-Dec-2010 19:03:21	[ch1] Error [ch2] Error	[Refresh] [Delete]
RTR-500WV-tandd-demo (RTR500AW)		madn_6.9 (RTR501)	[Full]	15-Dec-2010 19:01:51	[ch1] 23.6 C	[Refresh] [Delete]
	Chromag	Kamui (RTR574)	[Full]	23-Mar-2011 11:21:58	[ch1] 7260 lx [ch2] 0.108 mW [ch3] 22.8 C [ch4] 32 % [ch5] 521900 lx [ch6] 7.134 mW	[Refresh] [Delete]
		Stylus (RTR501)	[Full]	23-Mar-2011 11:24:43	[ch1] 24.0 C	[Refresh] [Delete]
	Trek	Madn5.7 (RTR501)	[Full]	23-Mar-2011 11:24:24	[ch1] 28.5 C	[Refresh] [Delete]
	madn6.9 (RTR503)	[Full]	23-Mar-2011 11:24:28	[ch1] 8.9 C [ch2] 33 %	[Refresh] [Delete]	

<http://www.webstorage-service.com/>

## Software Included with Base Unit



### RTR-500GSM for Windows

This software is made up of three applications:  
RTR-500GSM Settings Utility  
Temperature / Humidity Graph  
Adjustment Tools



### RTR-500W for Windows

This software is made up of five applications:  
RTR-500W Settings Utility  
Temperature / Humidity Graph  
Multi-Scale Graph  
Data Download Tool  
Adjustment Tools



### RTR-500 for Windows

This software is made up of five applications:  
RTR-500 Settings Utility  
RTR-500 for Windows  
Temperature / Humidity Graph  
Multi-Scale Graph  
Adjustment Tools

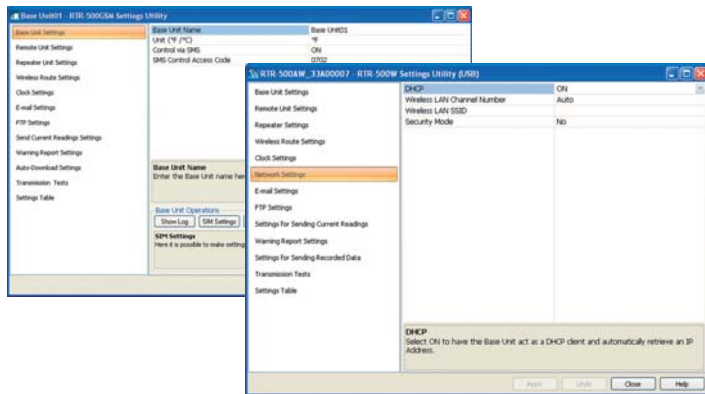


### RTR-500DC for Windows

This software is made up of six applications:  
RTR-500DC Settings Utility  
RTR-500DC Manager  
Temperature / Humidity Graph  
Multi-Scale Graph  
Adjustment Tools  
Data Download Tool

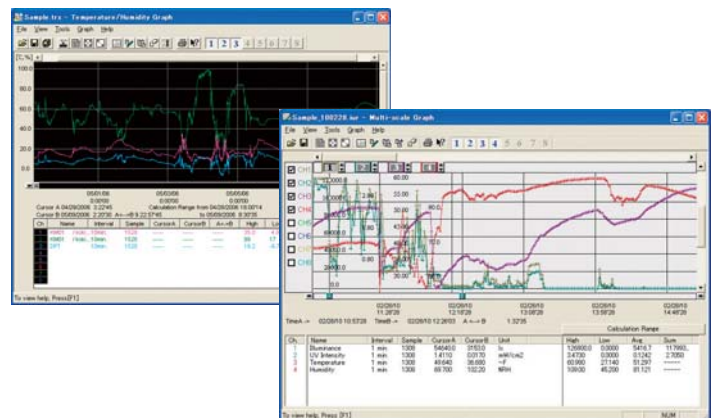
### "Settings Utility" Program makes Settings a Snap!

The Settings Utility application is used to take care of all Base Unit settings and registration of Remote Units and Repeaters. After having registered and placed the Remote Units and Repeaters in the field, it is possible to run communication tests to check signal strength between the various units to ensure stable communication.



### Intuitive User-Friendly Graph Tools (Temperature / Humidity Graph and Multi-Scale Graph)

With either program you can view up to eight channels of data in one graph. The Graph programs intuitive operation allows the User to easily hide or view channels, zoom in and out on data, switch back and forth from °C to °F, and view data in table form.



Microsoft and Windows are registered trademarks of Microsoft Corporation in the United States and/or other countries. GSM is a trademark of GSM MOU Association. All registered trademarks, company names, product names and logos mentioned herein are the property of T&D Corporation or of their respective owners.



## T&D CORPORATION

817-1 Shimadachi Matsumoto City,  
Nagano 390-0852 Japan  
Facsimile (+81) 263-40-3152  
E-mail: sales@tandd.com